



ART DECO AND INTERBELLUM TABLEWARE

Historic Glass and Crystal



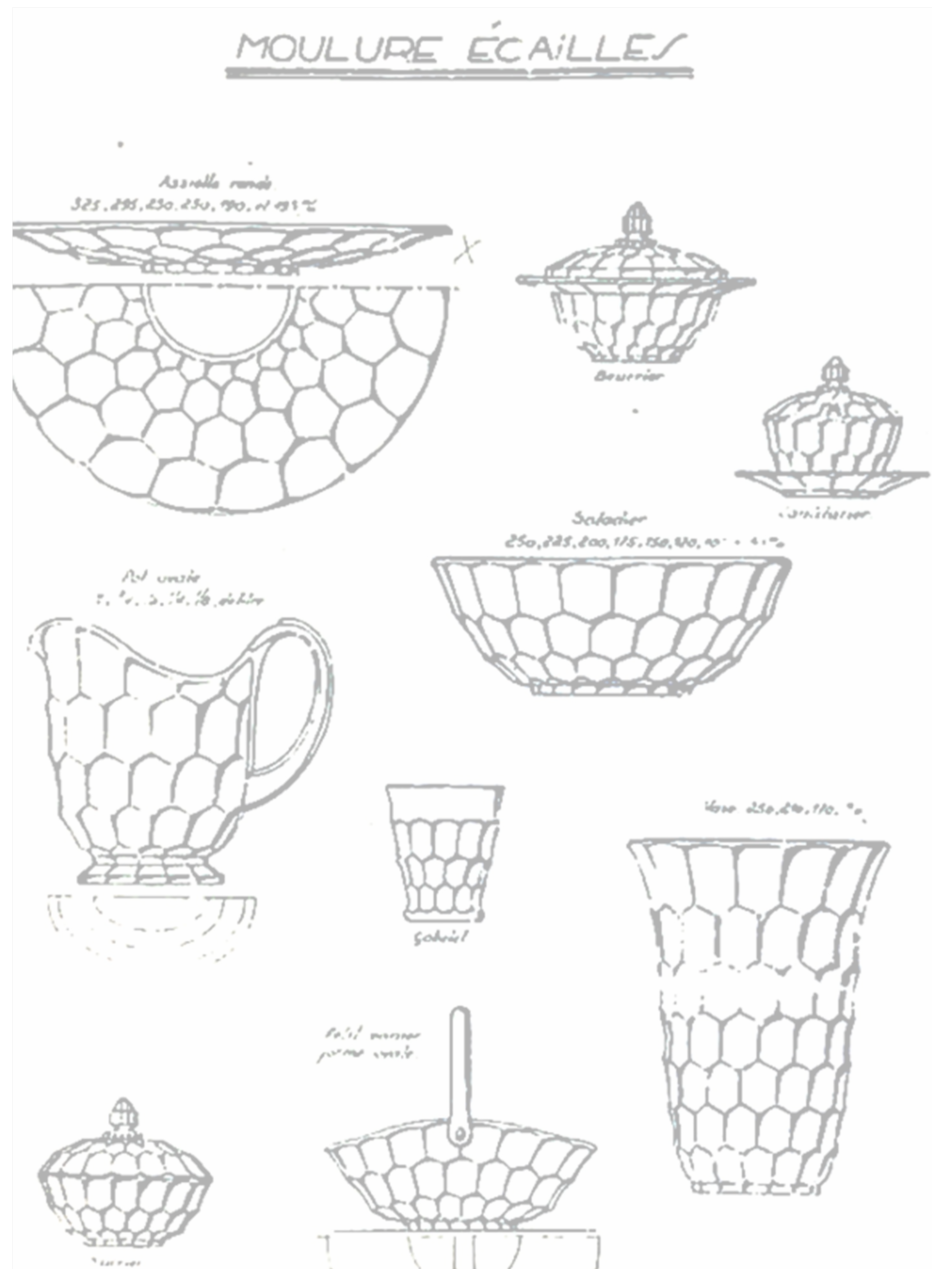
COLLECTION I 2024

VSL Luxval

This exclusive selection of glassware produced by Belgian Val St Lambert features exceptional items from the Luxval Écailles, Éclat, and Côtes plates series (1935).

VAL SAINT LAMBERT
"LUXVAL"
BELGIQUE

The Luxval series of 1935 are linked to the name of multi-talented artist Charles Graffart (1893-1967). In the early '30s Graffart — Val St Lambert's chief designer since 1929 — launched the Luxval series in response to the highly successful Bohemian glass production of that period, in an increasingly democratic market in which more broadly affordable luxury tableware was in high demand. The art deco tableware from the Luxval series in clear cast glass and half crystal was a success, and its production continued throughout the 40s and 50s.



ÉCAILLES

Typical of the Écailles series is the decorative faceted honeycomb pattern, already seen in 19th-century Chinese glasswork. The series has affinity with the highly popular Bohemian Mylord series, designed in 1921 by Rudolf Schröter (1887—after 1958) for Josef Inwald (in England known as 'Jacobean ware').



1L pitchers H19 L22,5 W11,5 cm
1157 and 1248 gr

Cream & sugar sets (H7 L12 W8,5 & H5,5 L9,5
W9,5 cm) on a tray (H2 L20,5 W12,5 cm)
C. 700 and 770 gr





Sauce boats H7,5 L17 W8 cm
c. 270 and 300 gr



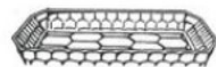
Cheese dome H16 L23,5 W23,5 cm
1517 gr

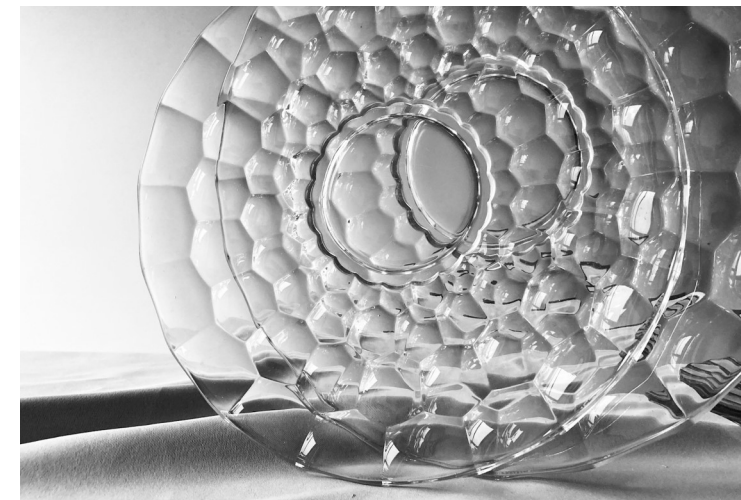
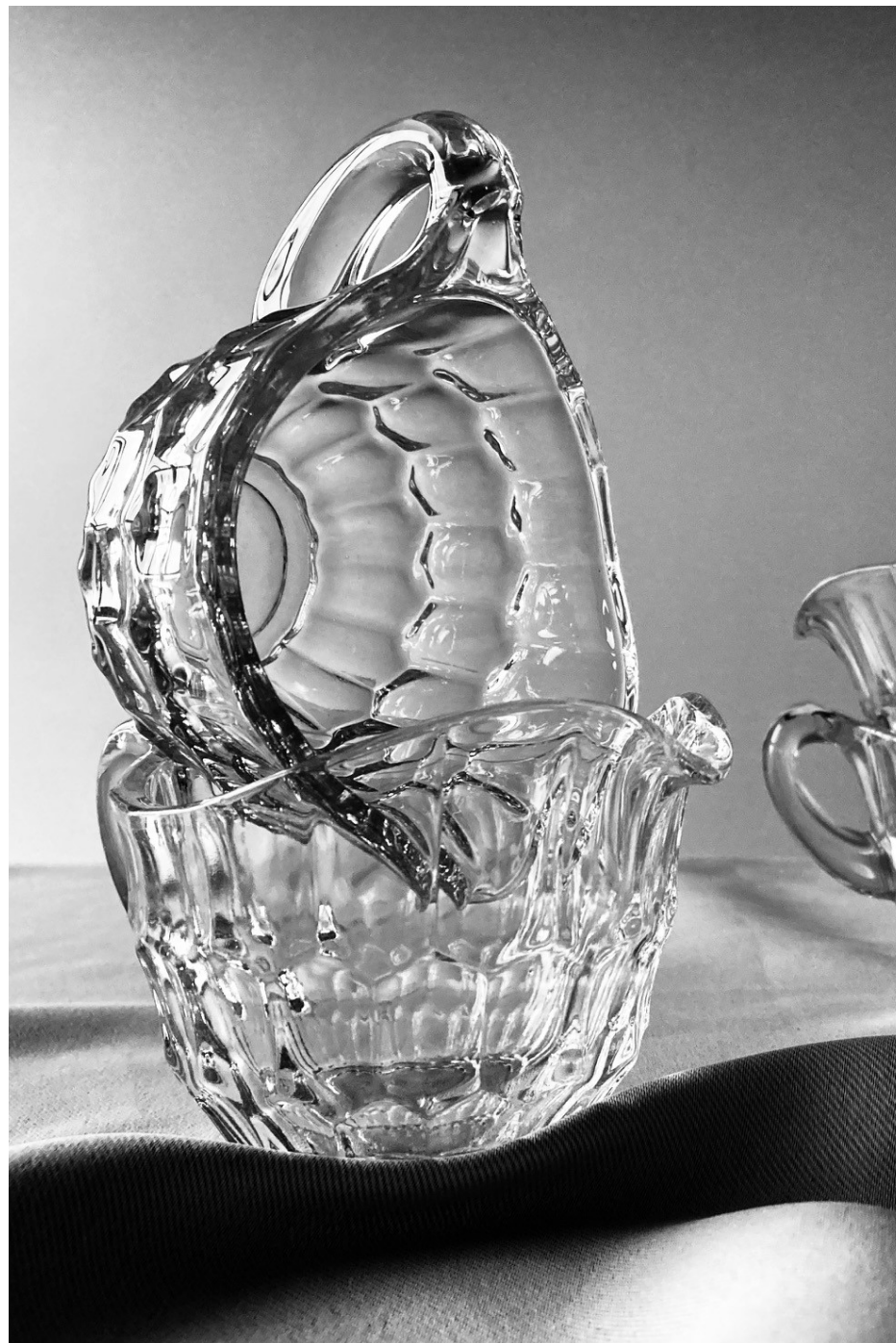




Nesting bowl set 8 bowls
Outer bowl H10 L24,5 W24,5 cm
Set c. 4200 gr

Serving tray H4,5 L29,5 W22,5 cm
1610 gr



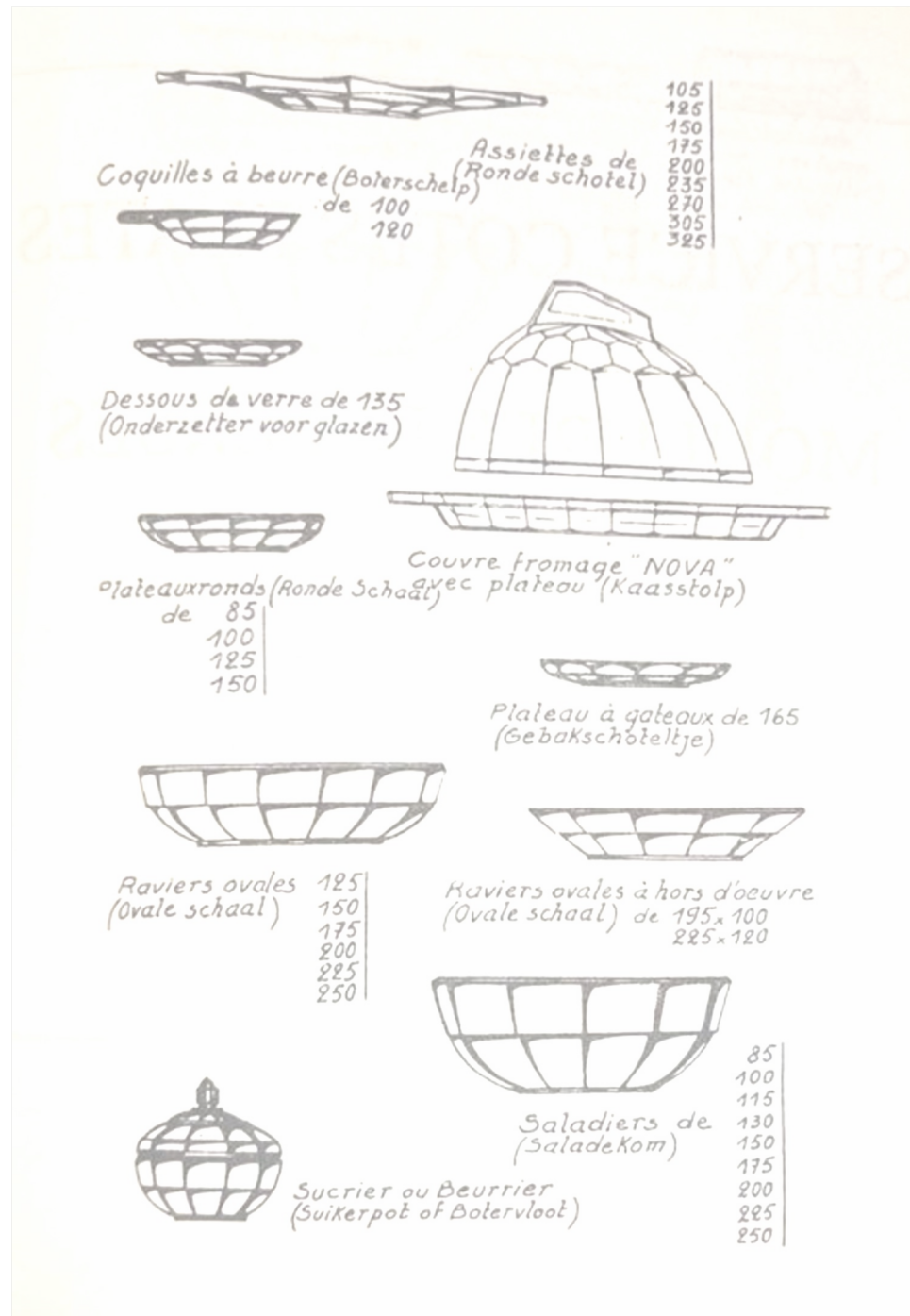


Platters H3,5 L32 W32 & H3 L29 W29 cm
c. 1000 and 1250 gr



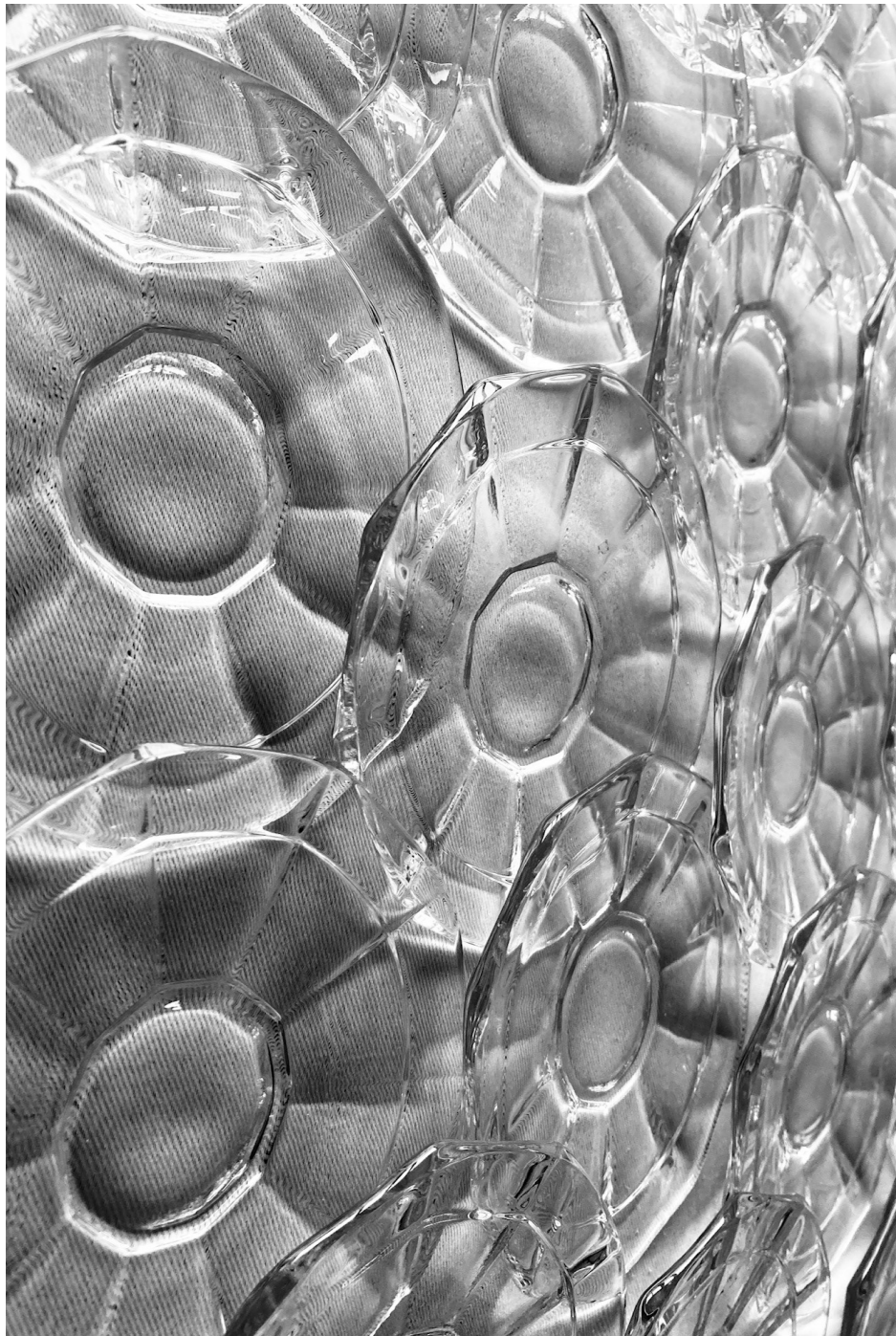
Jam jar H11 L13,5 W13,5 cm
470 gr





ÉCLAT

With its sober, lucid design, the Éclat series incorporates the aesthetics of Art Deco more than any other series of Luxval table ware. At the same time it has a timeless appeal, which makes it fit seamlessly into a tasteful contemporary table setting.



Pitcher H16 L21 W10 cm
805 gr

Oval nesting bowl set 6 bowls
outer bowl H7 L25 W18 cm
set c. 2685 gr





Nesting bowl sets 8 and 9 bowls
outer bowl H10 L24,5 W24,5 cm
set of 9 c. 4650 gr

Three serving trays H4, L23 W18,5 cm
each between 675 and 740 gr





Jam jars H10,5 L13,5 W13 cm
c. 440 gr

Platters H3,5 L32 W32 & H3 L29 W 29 cm
c. 1012 and 1380 gr

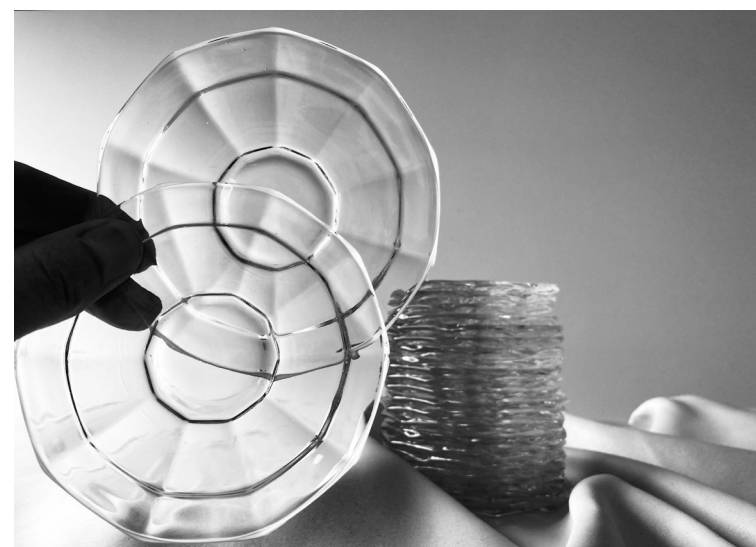




12 amuse plates H2 diam. 10 cm
set c. 1130 gr



20 flat amuse plates H1 diam. 10 cm
set c. 1580 gr





CÔTES PLATES

With its flatted sides and lobed borders *Côtes plates* is the most classic in the Luxval series. Some alone standing pieces, such as the famous (sou)coupe *Noemie*, the *Europe-Asie* pitcher, or the coupe *Irene* are also associated — and can be combined — with this series.



Cheese dome H16,5 plate W21,5
and dome W14 cm c. 1330 gr

Nesting bowl set 7 bowls
outer bowl H10 L25,5 W25,5 cm
set 4435 gr





Cake standard
H13,5 L28,5 W28,5 cm
1309 gr

Set of 10 oval side plates
H3 L18,5 W11,5 cm
set 2623 gr







High footed bowl H18 L21 W21 cm
1045 gr

Platters H4 L33 W33 & H3 L29 W29 cm &
H3,5 L26 W 26
c. 1250, 1067 and 745 gr





 15 amuse plates
 6 x H1 diam. 10,5 cm set 415 gr
6 x H2 diam. 10 cm set 675 gr
3 x H2,5 diam. 12,5 cm set 677 gr

Oval bowl set 6 bowls
H4 L18 W13 cm
c. 1625 gr set





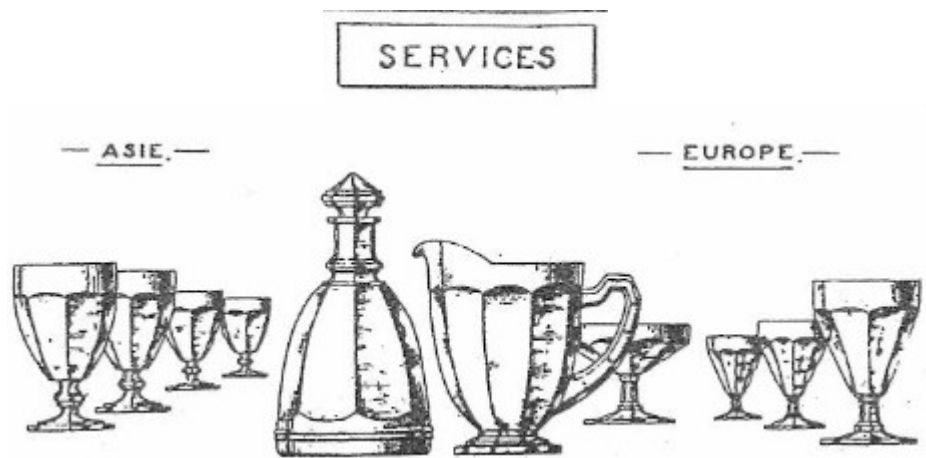
Round coupe and soucoupes *Noemie* H10 L23,5 W17 cm
700 gr and 3 x H5,5 diam 12 cm set 739 gr and
lidded jar H16 diam 10 cm 436 gr

SERVICE A LARGES COTES PLATES -A
(SUITE)





Set of *Europe/Asie* pitchers H20 L22 W14,5 & H18 L20 W13 cm c. 1173 and 1015 gr





Round *Irene* bowl H12 L25 W25 cm
1414 gr

